



Yale 
LIFT TRUCK TECHNOLOGIES

ERP 30-70UX

Pneumatic tire electric
counterbalanced forklift

3,000-7,000 lbs.



Reliable performance in a value-driven package.

ERP30UX

ERP35UX

ERP40UX

ERP50UX

ERP60UX

ERP70UX

For any size operation, keeping material handling costs in check is critical to protecting profits. Whether you're a single truck operation or scaling your existing fleet, the UX Series can be a budget-friendly choice to optimize your operation.

Available with a 3,000-7,000-pound load capacity and a range of standard and optional features, the Yale® ERP30-70UX is a straightforward option for both indoor and outdoor applications across many different industries. Experience reliable performance at an affordable price with this pneumatic tire, electric counterbalanced forklift—all backed by the reliable quality and support you expect from the Yale brand and dealer network.



EASY TO OPERATE

Increase productivity and reduce fatigue with an ergonomic operator compartment designed for comfort, simplicity and familiarity.



SERVICE MADE SIMPLE

Minimize service time with easy access to key components such as the compact powertrain and controllers.



LOW COST OF OPERATION

Protect your bottom line with reliable, high-quality components and fast access to affordable replacement parts.



1. CONVENIENT STEP HEIGHT

A low, conveniently placed step helps make getting on or off the truck easy for the operator.

2. ADJUSTABLE OPERATOR COMPARTMENT

An adjustable seat and steering column combined with a compact steering wheel enable the operator to find a comfortable position while a low steering effort optimizes performance in confined spaces.

3. WIDE VIEW MAST

A wide mast window provides a significant front field of view, helping support operator awareness.

4. PROVEN AC TECHNOLOGY

Utilizes reliable AC controllers coupled with AC traction and hydraulic motors for precise truck controllability. Additionally, the controllers are easily accessible which helps minimize service time.

5. POWER SOURCE OPTIONS

Available with either traditional lead acid or thin plate pure lead (TPPL) batteries to help configure the truck to the application.

6. COMPACT POWERTRAIN

The integrated motor, transmission and axle provide adequate access for maintenance. Precision cut gears are incorporated, leading to reduced wear and tear.

7. HIGH STRENGTH OVERHEAD GUARD

The profiled steel used in the overhead guard is made of high-strength materials to enhance durability and help safeguard the operator.

8. ROBUST HYDRAULIC SYSTEM

High quality cylinders with hard chrome rods and a full-flow, low pressure filter on the return line help reduce wear and minimize service costs.

Simple. Affordable. Adaptable.

COMFORT

- Low entrance step and large floor space
- Adjustable, full suspension seat with lumbar support
- Small diameter steering wheel
- Adjustable steering column
- Ergonomically designed hand brake

PERFORMANCE

- Simple display for quick access to vital truck information (truck speed, battery power and error codes)
- Multiple performance modes (selectable on display) to match application
- Hydraulic power steering minimizes steer effort and “kick-back” for precise positioning
- AC traction and lifting motors, with electronic control, deliver reliable performance
- Maintenance free oil-immersed brakes and regenerative braking system for smooth traction

SAFETY AND STABILITY

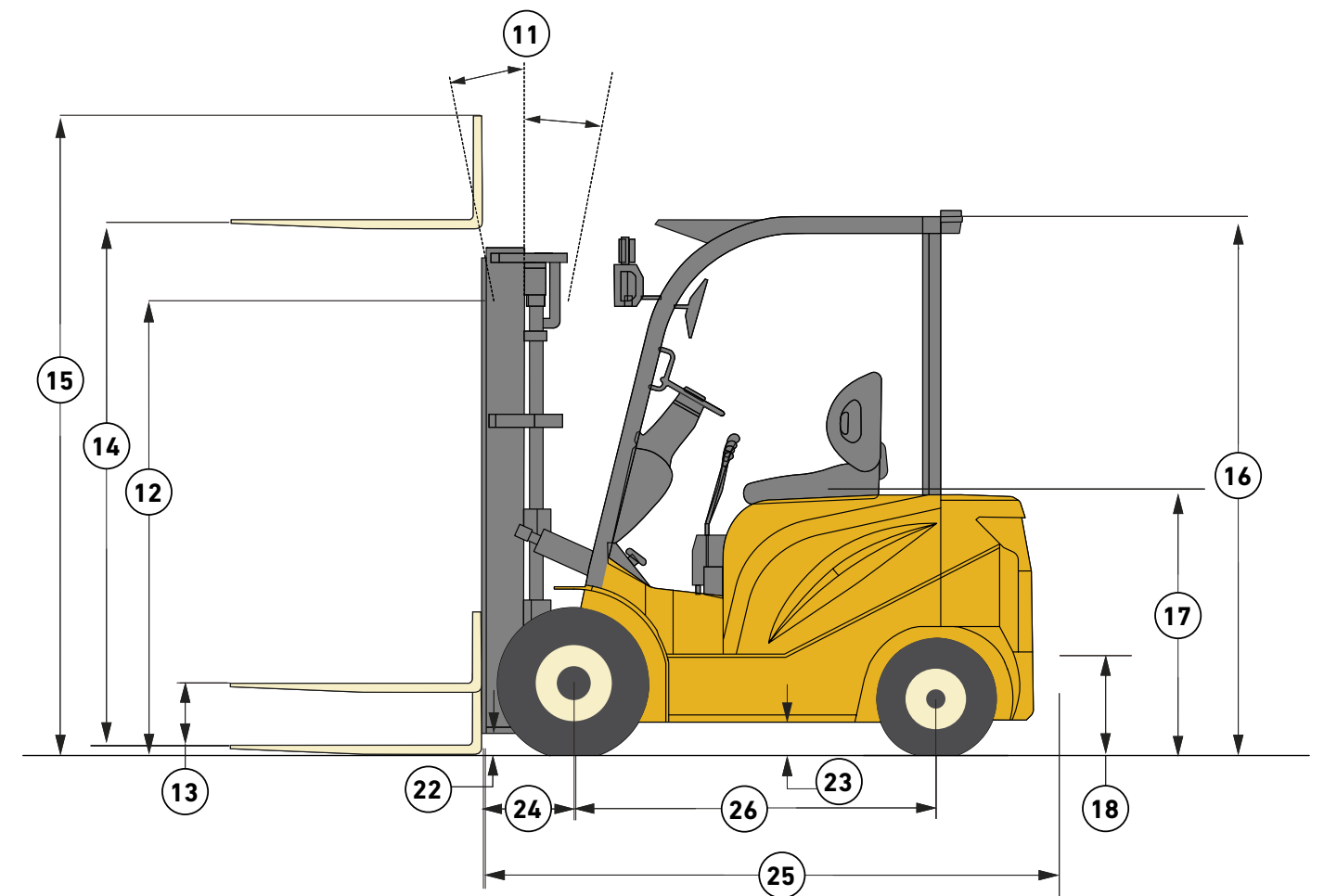
- High visibility mast with soft landing absorbs shock
- Controlled mast lowering speed helps reduce damaging product
- Secure overhead guard
- Standard LED lights
- Operator presence system

SERVICE

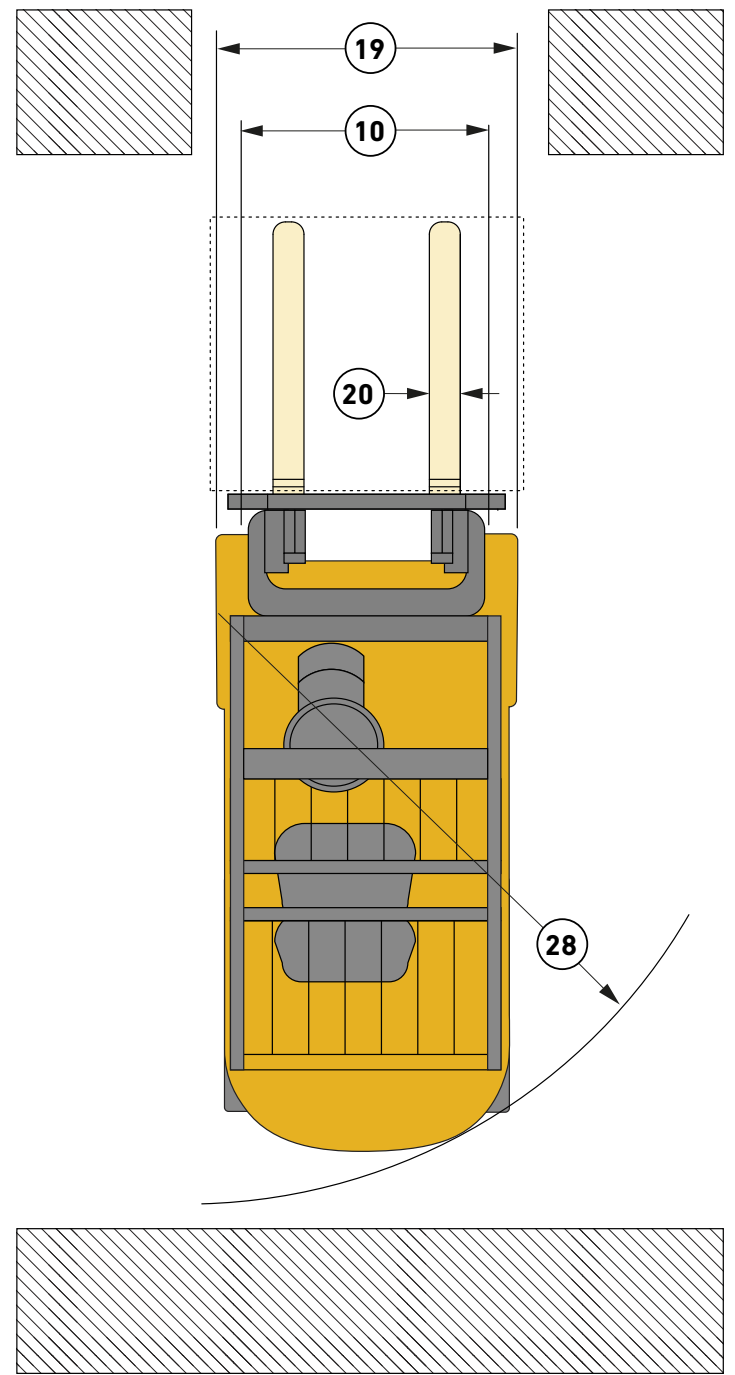
- Brushless AC traction and hydraulic motors help reduce maintenance cost
- Easy access to the drivetrain helps minimize service time
- Removable cover provides convenient access to controller assembly mounted inside the counterweight



TRUCK DIMENSIONS



TRUCK DIMENSIONS



GENERAL SPECIFICATIONS

		Yale									
DISTINGUISHING MARK	1	Manufacturer	Yale								
	2	Model designation	ERP30UX	ERP35UX	ERP40UX	ERP50UX	ERP60UX	ERP70UX			
	3	Power	Battery	Battery	Battery	Battery	Battery	Battery			
	4	Operation	Sit	Sit	Sit	Sit	Sit	Sit			
	5	Rated capacity	lb (kg)	3000 (1361)	3500 (1588)	4000 (1814)	5000 (2268)	6000 (2722)	7000 (3175)		
	6	Load center	in (mm)	24 (610)	24 (610)	24 (610)	24 (610)	24 (610)	24 (610)		
TIRES, CHASSIS	7	Tire type (std/opt)	SE								
	8	Tire size (drive/steer)	in	6.00-9 / 5.00-8	21x8-9 / 5.00-8	23x9-10 / 18x7-8	23x9-10 / 18x7-8	23x9-10 / 18x7-8	23x10-12 / 200/50-10		
	9	Wheels - number x=driven (drive/steer)	2x/2								
DIMENSIONS	10	Tread	Ctr. of tires	Std dr/steer	in (mm)	37.6 (955) / 36.2 (920)	37.6 (955) / 36.2 (920)	41.7 (1058) / 37.8 (960)	41.7 (1058) / 37.8 (960)	41.9 (1065) / 38.6 (980)	44.3 (1125) / 39.8 (1010)
	11	Mast tilt				0p9	5F/10B	5F/10B	5F/10B	5F/10B	5F/10B
	12	Mast - lowered height	Std mast	in (mm)	78.8 (2000)	78.8 (2000)	79.4 (2015)	79.4 (2015)	80.5 (2045)	83.5 (2120)	
	13	Free lift - top of forks	Std 2stg limited free lift mast	in (mm)	6.7 (170)	6.7 (170)	7.0 (180)	7.0 (180)	8.2 (210)	8.4 (215)	
	14	Lift height - top of fork	Std mast	in (mm)	119.4 (3035)	119.4 (3035)	119.6 (3040)	119.6 (3040)	119.8 (3045)	120.0 (3050)	
	15	Mast - extended height	Std mast without LBR	in (mm)	156.7 (3980)	156.7 (3980)	156.7 (3980)	156.7 (3980)	156.7 (3980)	156.7 (3980)	
	16	Overhead guard height			in (mm)	84.8 (2155)	84.8 (2155)	84.8 (2155)	84.8 (2155)	84.8 (2155)	84.2 (2140)
	17	Seat height	Full susp seat	in (mm)	42.5 (1080)	42.5 (1080)	42.5 (1080)	42.5 (1080)	42.5 (1080)	42.5 (1080)	
	18	Tow pin height			in (mm)	11.4 (290)	11.4 (290)	9.8 (250)	9.8 (250)	10.6 (270)	10.6 (270)
	19	Overall width	Std tires	in (mm)	44.1 (1120)	44.1 (1120)	50.6 (1285)	50.6 (1285)	50.6 (1285)	53.7 (1365)	
	20	Forks			in (mm)	1.4 x 3.9 x 36 (35 x 100 x 920)	1.4 x 3.9 x 36 (35 x 100 x 920)	1.6 x 4.8 x 42 (40 x 120 x 1067)	1.6 x 4.8 x 42 (40 x 120 x 1067)	1.8 x 4.8 x 42 (45 x 120 x 1067)	2.0 x 4.8 x 42 (50 x 120 x 1067)
	21	Standard carriage width	Without LBR	in (mm)	40.9 (1040)	40.9 (1040)	40.9 (1040)	40.9 (1040)	43.4 (1100)	43.4 (1100)	
	22	Ground clearance	Lowest point - RL	in (mm)	3.7 (95)	3.7 (95)	2.5 (65)	2.5 (65)	2.5 (65)	3.1 (80)	
	23	Ground clearance	Center of frame - RL	in (mm)	4.1 (105)	4.1 (105)	3.7 (95)	3.7 (95)	4.3 (110)	3.2 (83)	
	24	Load distance			in (mm)	16.1 (410)	16.1 (410)	17.9 (455)	17.9 (455)	18.7 (475)	19.5 (495)
	25	Length to face of forks			in (mm)	81.6 (2075)	81.6 (2075)	90.0 (2285)	90.0 (2285)	100.3 (2550)	103.9 (2640)
	26	Wheelbase			in (mm)	54.3 (1380)	54.3 (1380)	58.5 (1485)	58.5 (1485)	65.7 (1670)	66.5 (1690)
	27	Right angle stack			in (mm)	141.5 (3595)	141.5 (3595)	147.8 (3755)	147.8 (3755)	159.2 (4045)	162.2 (4120)
	28	Outside turning radius			in (mm)	77.4 (1965)	77.4 (1965)	81.9 (2080)	81.9 (2080)	92.5 (2350)	94.7 (2405)
29	Truck weight			lb (kg)	6505 (2950)	7120 (3230)	8665 (3930)	9040 (4100)	10475 (4750)	11905 (5400)	
30	Axle loading - drive			lb (kg)	8730/1080 (3960/490)	9435/1345 (4280/610)	11375/1655 (5160/750)	12690/1860 (5755/845)	15215/1870 (6900/850)	17340/2280 (7865/1035)	
31	Axle loading - steer			lb (kg)	3065/3440 (1390/1560)	2845/3970 (1290/1800)	4180/4490 (1895/2035)	3640/5405 (1650/2450)	4565/5910 (2070/2680)	5070/6835 (2300/3100)	
PERFORMANCE DATA	32	Travel speed	RL/NL	mph (kph)	9.3/9.9 (15/16)	9.3/9.9 (15/16)	9.3/9.9 (15/16)	9.3/9.9 (15/16)	9.3/9.9 (15/16)	9.3/9.9 (15/16)	
	33	Lift speed	RL/NL	fpm (mms)	63.0/78.7 (320/400)	59.0/78.7 (320/400)	63.0/78.7 (320/400)	55.1/78.7 (280/400)	63.0/78.7 (320/400)	55.1/78.7 (280/400)	
	34	Lower speed	RL/NL		98.4/76.7 (500/390)	98.4/76.7 (500/390)	82.7/76.7 (420/390)	82.7/76.7 (420/390)	82.7/76.7 (420/390)	78.7/70.0 (400/320)	
	35	Gradability	RL/NL	%	15/23	14/22	15/23	15/22	15/22	15/22	
	36	Drawbarpull	RL/NL	lbf	2605/1685	2605/1685	2920/2360	2920/2360	4270/2470	4270/2470	
	37	Brake	Method of control (service/parking)			Hydraulic/mechanical	Hydraulic/mechanical	Hydraulic/mechanical	Hydraulic/mechanical	Hydraulic/mechanical	Hydraulic/mechanical
38	Method of operation (service/parking)			Foot/hand	Foot/hand	Foot/hand	Foot/hand	Foot/hand	Foot/hand		
ELECTRIC-MOTOR	39	Battery	Type			Lead acid or thin plate pure lead	Lead acid or thin plate pure lead	Lead acid or thin plate pure lead	Lead acid or thin plate pure lead	Lead acid or thin plate pure lead	Lead acid or thin plate pure lead
	40	Voltage			48	48	48	48	80	80	
	41	Traction motors (dual)	S2 60 minute rating (each)	hP (kW)	8.7 (6.5)	8.7 (6.5)	11.4 (8.5)	11.4 (8.5)	15.4 (11.5)	15.4 (11.5)	
	42	Pump motor	S3 15 minute rating	hP (kW)	11.5 (8.6)	11.5 (8.6)	14.7 (11.0)	14.7 (11.0)	20.1 (15.0)	20.1 (15.0)	
	43	Attachment relief pressure			psi (bar)	2100 (145)	2100 (145)	2535 (175)	2535 (175)	2535 (175)	2535 (175)
	44	Auxiliary oil flow			gal/min (l/min)	10 (38)	10 (38)	10 (38)	10 (38)	10 (38)	10 (38)
	45	Sound level			dB(A)	70.3	70.3	67.5	67.5	71.8	71.8

ERP30-35UX MAST TABLE

Mast type	Max fork height in (mm)	Overall extended height			Free lift		Mast tilt	
		Lowered height	Lift height		Without LBR	With LBR	Forward	Back
			Without LBR	With LBR				
2FL	129.9 (3300)	84.3 (2140)	168.8 (4285)	150.2 (3815)	5.4 (135)	5.4 (135)	5	10
	137.7 (3500)	88.2 (2240)	176.6 (4485)	158.1 (4015)	5.4 (135)	5.4 (135)	5	10
	157.4 (4000)	100 (2540)	196.3 (4985)	177.8 (4515)	5.4 (135)	5.4 (135)	5	10
2FFL	118.1 (3000)	78.4 (1990)	156.9 (3985)	138.4 (3515)	55.8 (1415)	40.6 (1030)	5	10
	129.9 (3300)	84.3 (2140)	168.8 (4285)	150.2 (3815)	61.7 (1565)	46.5 (1180)	5	10
3FFL	177.1 (4500)	80.4 (2040)	216.0 (5485)	197.5 (5015)	57.9 (1470)	42.6 (1080)	5	6
	188.9 (4800)	84.3 (2140)	227.8 (5785)	209.3 (5315)	61.9 (1570)	46.5 (1180)	5	6
	216.5 (5500)	94.7 (2405)	255.4 (6485)	236.9 (6015)	72.3 (1835)	56.9 (1445)	3	6
	236.2 (6000)	102 (2590)	275.0 (6985)	256.5 (6515)	80.4 (2040)	65.0 (1650)	3	6

ERP60UX MAST TABLE

Mast type	Max fork height in (mm)	Overall extended height			Free lift		Mast tilt	
		Lowered height	Lift height		Without LBR	With LBR	Forward	Back
			Without LBR	With LBR				
2FL	129.9 (3300)	86.5 (2195)	155.2 (3940)	174.9 (4440)	6.5 (165)	6.5 (165)	5	10
	137.7 (3500)	90.4 (2295)	163 (4140)	182.7 (4640)	6.5 (165)	6.5 (165)	5	10
	157.4 (4000)	102.2 (2595)	182.7 (4640)	202.4 (5140)	6.5 (165)	6.5 (165)	5	10
2FFL	118.1 (3000)	80.6 (2045)	143.4 (3640)	163 (4140)	54.8 (1390)	36.9 (935)	5	10
	129.9 (3300)	86.5 (2195)	155.2 (3940)	174.9 (4440)	60.7 (1540)	42.8 (1085)	5	10
3FFL	177.1 (4500)	82.5 (2095)	203.4 (5165)	222.1 (5640)	59.5 (1510)	38.4 (975)	5	6
	188.9 (4800)	86.5 (2195)	215.2 (5465)	233.9 (5940)	63.4 (1610)	42.4 (1075)	5	6
	216.5 (5500)	96.9 (2460)	242.8 (6165)	261.5 (6640)	73.5 (1865)	52.4 (1330)	3	6
	236.2 (6000)	104.2 (2645)	262.5 (6665)	281.2 (7140)	81.2 (2060)	60.1 (1525)	3	6

ERP40-50UX MAST TABLE

Mast type	Max fork height in (mm)	Overall extended height			Free lift		Mast tilt	
		Lowered height	Lift height		Without LBR	With LBR	Forward	Back
			Without LBR	With LBR				
2FL	129.9 (3300)	85.3 (2165)	154.2 (3915)	170.1 (4320)	5.6 (140)	5.6 (140)	5	10
	137.7 (3500)	89.2 (2265)	162.1 (4115)	178 (4520)	5.6 (140)	5.6 (140)	5	10
	157.4 (4000)	101 (2565)	181.7 (4615)	197.7 (5020)	5.6 (140)	5.6 (140)	5	10
2FFL	118.1 (3000)	79.4 (2015)	142.4 (3615)	158.3 (4020)	54.6 (1385)	38.8 (985)	5	10
	129.9 (3300)	85.3 (2165)	154.2 (3915)	170.1 (4320)	60.5 (1535)	44.7 (1135)	5	10
3FFL	177.1 (4500)	81.7 (2075)	203.6 (5170)	217.2 (5515)	56.7 (1440)	41 (1040)	5	6
	188.9 (4800)	85.7 (2175)	215.4 (5470)	229 (5815)	60.7 (1540)	44.9 (1140)	5	6
	216.5 (5500)	96.1 (2440)	243 (6170)	256.5 (6515)	70.9 (1800)	55.2 (1400)	3	6
	236.2 (6000)	103.4 (2626)	262.6 (6670)	276.2 (7015)	78.4 (1990)	62.6 (1590)	3	6

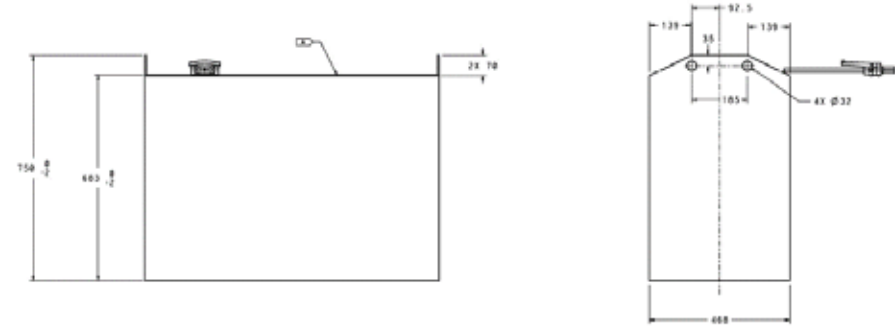
ERP70UX MAST TABLE

Mast type	Max fork height in (mm)	Overall extended height			Free lift		Mast tilt	
		Lowered height	Lift height		Without LBR	With LBR	Forward	Back
			Without LBR	With LBR				
2FL	129.9 (3300)	89.4 (2270)	157.9 (4010)	174.9 (4440)	6.7 (170)	6.7 (170)	5	10
	137.7 (3500)	93.4 (2370)	165.8 (4210)	182.7 (4640)	6.7 (170)	6.7 (170)	5	10
	157.4 (4000)	105.2 (2670)	185.5 (4710)	202.4 (5140)	6.7 (170)	6.7 (170)	5	10
2FFL	118.1 (3000)	83.5 (2120)	145.7 (3700)	161.5 (4100)	55.8 (1415)	39.4 (1000)	5	10
	129.9 (3300)	89.4 (2270)	157.5 (4000)	173.3 (4400)	61.7 (1565)	45.3 (1150)	5	10
3FFL	177.1 (4500)	85.5 (2170)	206.7 (5250)	222.5 (5650)	59.5 (1510)	38.4 (975)	5	6
	188.9 (4800)	89.4 (2270)	218.6 (5550)	234.3 (5950)	63.4 (1610)	42.4 (1075)	5	6
	216.5 (5500)	99.9 (2535)	246.1 (6250)	261.9 (6650)	73.5 (1865)	52.4 (1330)	3	6
	236.2 (6000)	107.1 (2720)	265.8 (6750)	281.5 (7150)	81.2 (2060)	60.1 (1525)	3	6

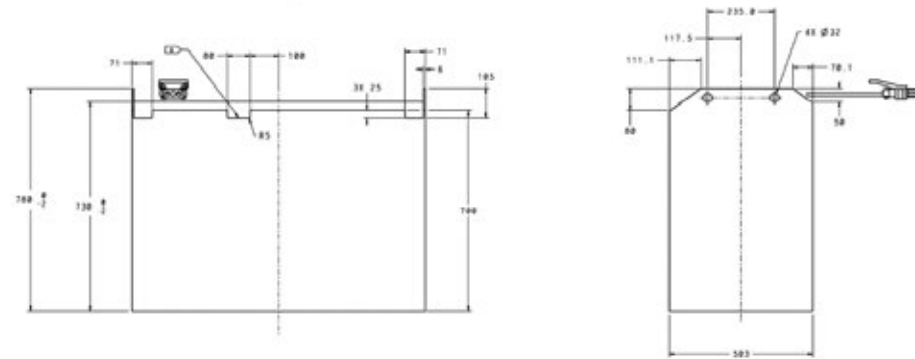
BATTERY COMPARTMENT SPECIFICATIONS

Model		Battery specifications					
		Electrical	Battery size			Weight	
			Voltage	W in (mm)	L in (mm)	H in (mm)	Min lbs (kg)
ERP30-35UX	Vertical Extract	48	38.58 (986)	18.50 (470)	29.52 (750)	1510 (685)	1665 (755)
ERP40-50UX	Vertical Extract	48	40.47 (1027)	19.84 (504)	30.70 (780)	1930 (875)	2125 (965)
ERP60-70UX	Vertical Extract	80	40.47 (1027)	26.88 (682)	30.70 (780)	2975 (1350)	3285 (1490)

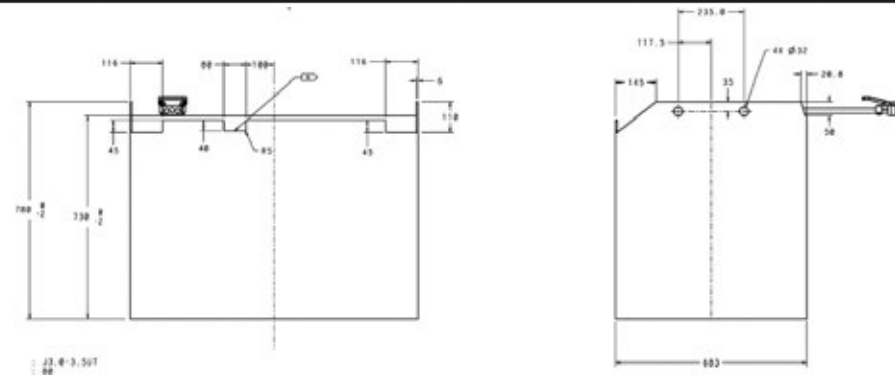
ERP30-35UX



ERP40-50UX



ERP60-70UX



FEATURES LIST

PERFORMANCE	STD	OPT	OPERATION CONTINUED	STD	OPT
48-volt electrical system (ERP30-50UX)	●		Cab: front and top panels (only with front wiper)		●
80-volt electrical system (ERP60-70UX)	●		Front glass with wiper		●
AC traction and pump motors (completely brushless)	●		Cab heater		●
Transistor drive and pump control	●		PVC rain top		●
Progressive thermal management system	●		Front working lights, turn light & tail lights (all lights are LED)		●
Dual drive motors	●		Rear working light (LED)		●
DRIVE	STD	OPT	Strobe LED Light (low mounted)		●
Pneumatic drive tire and steer tire	●		Blue spot lights		●
Solid pneumatic tires		●	Parking alarm	●	
LIFT	STD	OPT	Audible alarm		●
2-stage limited free lift (LFL) mast with maximum fork height of 119.4" (3000mm)	●		Rear handle and horn button		●
Available with 2-stage limited free lift (LFL) and 2- or 3-stage full free lift (FFL) mast		●	Speed limit (factory setting according to customer's requirement)		●
Mast tilt 5° forward / 10° backward	●		Speed limit when mast is raised (mast lift, truck speed limited to 3 km/h)		●
Mast tilt 5° forward / 6° back		●	DC to DC converter (output 5V 50W)		●
Load weight indicator		●	USB port		●
ERGONOMICS	STD	OPT	12V power port (output 12V 50W)		●
Non-suspension seat (vinyl) with seat belt and hip restraint	●		Operator presence system (OPS)	●	
Full-suspension seat (vinyl) with seat belt and hip restraint		●	HANDLING	STD	OPT
Seat belt interlock		●	39" (970 mm) wide class II (ERP30-35UX), 40.5" (1040mm) wide class II (ERP40-50UX) or 43.5" (1100mm) wide class III (ERP60-70UX) hook-type carriage	●	
Sequential seat belt interlock		●	36.6" (930 mm) tall (ERP30-50UX), or 42.5" (1080mm) tall (ERP60-70UX) load back rest	●	
Side mirrors		●	Integral side shift		●
OPERATION	STD	OPT	Integral side shift for positioner		●
Standard construction - operating temperatures -5°C to +48°C	●		SUPPLEMENTAL	STD	OPT
Cold storage (to -18°C)		●	12 month / 2,000 hour full truck warranty	●	
Vertical battery extraction (lift out)	●		36 month / 6,000 hour powertrain warranty	●	
3 function hydraulic control valve	●		Operating manual	●	
4 function hydraulic control valve	●				
Cowl mounted mechanical levers	●				
Full cab (with front wiper with water spray, rear wiper)		●			
Cab: front, top and rear panels (with front wiper with water spray, rear wiper)		●			

About Yale

Yale Lift Truck Technologies leverages over a century of material handling experience and substantial investment in innovation to bring the most advanced technology-driven lift truck solutions to market. The company offers a full line of award-winning lift trucks, including reach trucks, order pickers, turret trucks, pallet jacks and trucks, pallet stackers, tow tractors and counterbalanced forklifts, as well as powerful operator assist solutions, proven robotics and a wide range of power sources to help customers adapt to today's demanding supply chain. Yale and its independent dealer network support these solutions with comprehensive after-sales service, parts, financing and training.



Yale Lift Truck Technologies
P.O. Box 7367
Greenville, NC 27835-7367
U.S.A.

yale.com



EXPLORE MORE
ONLINE.



MATERIALS HANDLING FOR:

Third-party logistics (3PL)

Auto parts distribution

Beverage

Cold & frozen foods

Food distribution

Food processing


Furniture & furnishings

Government

Health & pharma

Home centers & durables

Retail & e-commerce

© 2023 Hyster-Yale Group, Inc., all rights reserved. YALE and  are trademarks of Hyster-Yale Group, Inc.

Trucks may be shown with optional equipment and/or features not available in all regions. Truck performance may be affected by the condition of the vehicle, how it is equipped and the application. Specifications are subject to change without notice. Consult your Yale® Dealer if any of the information shown is critical to your application.

CERTIFICATION: Yale lift trucks meet the design and construction requirements of B56.1-1969, per OSHA Section 1910.178(a)(2), and also comply with the B56.1 revision in effect at time of manufacture.