



ERP 080-120VM

Four-wheel counterbalanced
pneumatic tire electric forklift

8,000-12,000 lbs.



High capacity for demanding applications, inside and out.

ERP080VM

ERP090VM

ERP100VM

ERP110VM

ERP120VM

Yale® ERP080-120VM high capacity four-wheel electric pneumatic tire forklifts were designed to provide maximum performance and all-day operator comfort in your heavy lifting operations. They deliver the power of an ICE forklift, with the efficiency of an electric. The Yale ERP-VM series features unmatched versatility for indoor and outdoor applications with industry proven engineering that shows up for every shift, maximizing material handling throughout your facility.

ERP080-120VM forklifts are a tough, stable solution when heavy lifting and high productivity go hand in hand. They feature robust industrial grade components and ICE-like drive axle assemblies with a cast ductile iron housing and full floating axle is designed to withstand heavy loads. Their brushless AC traction and hydraulic motors reduce maintenance costs and increase runtime through greater efficiency. Thoughtful ergonomics reduce operator fatigue and increase comfort, helping to increase overall productivity.



PRODUCTIVITY

Equipped with efficiency boosting features that help keep the operator productive all shift long



OPERATOR COMFORT

Operator compartment optimizes comfort and maximizes performance



DEPENDABILITY

Time-tested technology for reliable operation, day in and day out



LOWER OPERATING COST

Save time and money with longer service intervals and fewer parts



DID YOU KNOW? →

Best-in-class
operations have a
dock-to-stock cycle
time of less than
three hours.¹



Reliability, adaptability and high performance.

The Yale ERP-VM series is designed to get the job done, with industrial-grade components and smart engineering to provide productive value and long life. Innovative Zero Turn radius steer axle and dual AC drive motors provide exceptional maneuverability in congested areas and narrow aisles. The ERP-VM series excels everywhere from tough, short shuttle applications, to long runs and ramp usage. The reduced service and maintenance requirements of an electric forklift give the ERP-VM series substantial operating cost savings and enhanced durability vs. ICE trucks.



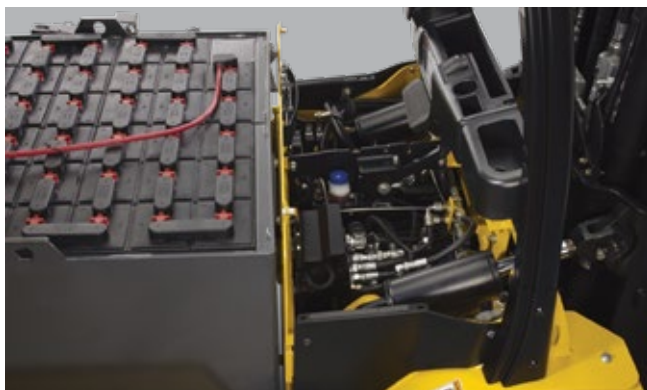
INDUSTRIAL GRADE COMPONENTS

These electric lift trucks must pass extreme ambient temperature testing, including freezing temperatures and blistering heat. They are ready for loads up to 12,000 pounds in the most demanding conditions.



MULTIFUNCTION DISPLAY

Features four operator selectable performance modes, indicates battery discharge, steer angle, travel direction, traction throttle and truck speed.



EASY SERVICE ACCESS

Engineered for simplified maintenance, featuring easily removable floor plates that require no tools, and a rear-hinged hood that provides convenient access for servicing the truck.



HI-VIS™ MAST

The Yale Hi-Vis™ mast was designed to maximize operator vision. The mast channels are manufactured from one-piece, high-strength rolled steel with reinforcing cross members to prevent cracking and resist lateral movement.

DID YOU KNOW?



Best-in-class operations ship more than 99% of orders on time.¹



“ZERO TURN” RADIUS

The “Zero Turn” radius steer axle and dual AC drive motors combine to provide extraordinary maneuverability in congested areas and narrow aisles.



PROVEN AC TECHNOLOGY

The ERP-VM series features proven AC technology coupled with the “Intellix” Vehicle System Manager (VSM) to monitor and maximize performance throughout the battery discharge cycle.

- Yale Continuous Stability System reduces truck lean in turns, improving lateral stability and is completely maintenance free, with no controllers, no sensors and no extra wiring
- Innovative steer axle mounting design enables superior travel over uneven surfaces
- Trunnion-mounted masts reduce load distance, enabling improved long load center handling
- Load rollers canted at three degrees to resist forward and backward movement
- CANbus technology reduces wiring and connections for greater reliability
- Drive axle uses high-strength gears and shafts to resist stress from quick direction changes
- Sealed electrical connections resist moisture and dirt



YALE VISION™ +

Yale Vision provides real-time fleet monitoring for more informed decisions. The solution offers easy-to-use dashboards and analytics to manage cost, optimize productivity and protect assets.

+ = Optional equipment

Greater comfort for greater productivity.

With skilled operators harder to find and retain, you need a responsive forklift that's easy to drive and comfortable all day long. The pneumatic tires and convenient pedal positioning create a car-like feel, greatly enhancing operator comfort. ERP-VM series electric lift trucks long list of standard ergonomic features help reduce operator fatigue and injuries. The thoughtfully placed controls eliminate physical stress and strain, allowing for exacting precision while handling loads.



EASY ACCESS

Three-point entry/exit with low step in height, large contoured grab handles and deep, anti-skid steps helps minimize strain and fatigue when operators are frequently on and off the truck.



OPEN FLOOR PLATE DESIGN

Open floor plate design offers plenty of foot room while the extra-thick floor mat absorbs shock and channels moisture away from key components.



REAR DRIVE HANDLE +

Forklift operators spend a lot of time driving in reverse. Take the twisting and straining out of reverse operation with an optional rear drive handle and a swiveling seat.



TELESCOPING STEER COLUMN +

The optional telescoping steer column with tilt memory offers superior adjustability to accommodate wide range of operators.



ELECTROHYDRAULIC CONTROLS +

Optional armrest with Accutouch minilevers offer fingertip control of travel direction, horn, and hydraulic functions. Standard mechanical levers are low effort and ergonomically placed, providing operator comfort.



+ = Optional equipment



Engineered for the long haul.

Forklifts are essential to keeping the entire operation moving, so you can't afford to have a unit out of service. Yale ERP080-120VM high capacity four-wheel electric pneumatic tire forklifts are designed with quality components and simple maintenance requirements to greatly diminish downtime and unplanned service.

AC TECHNOLOGY

Proven AC traction and hydraulic motors completely eliminate brushes and associated rigging for reduced maintenance costs.

AUTO DECELERATION SYSTEM

Help extend brake life with traction motor regenerative braking, and an automatic electric park brake engagement when AC traction motor reaches zero.

WET DISC BRAKES

Wet disc brakes are standard equipment on ERP080-120VM series forklifts. They provide 5 times more service life vs. conventional dry drum or disc brakes. The enclosed system is impervious to water, dust and contaminants and requires no adjustments.

THERMAL MANAGEMENT SYSTEM

Protect motors from overheating automonitoring internal temperature sensors.

ELECTRICAL SYSTEM w/ CANbus COMMUNICATION

Fewer connections and less complex wiring helping simplify and reduce maintenance.

EASY SERVICE ACCESS

Component covers are easily removable and require no tools to access powertrain.

About Yale


Yale Lift Truck Technologies leverages over a century of material handling experience and substantial investment in innovation to bring the most advanced technology-driven lift truck solutions to market. The company offers a full line of award-winning lift trucks, including reach trucks, order pickers, turret trucks, pallet jacks and trucks, pallet stackers, tow tractors and counterbalanced forklifts, as well as powerful operator assist solutions, proven robotics and a wide range of power sources to help customers adapt to today's demanding supply chain. Yale and its independent dealer network support these solutions with comprehensive after-sales service, parts, financing and training.

Yale Lift Truck Technologies
P.O. Box 7367
Greenville, NC 27835-7367
U.S.A.

yale.com



EXPLORE MORE
ONLINE.
←

© 2025 Hyster-Yale Materials Handling, Inc., all rights reserved. YALE and  are trademarks of Hyster-Yale Materials Handling, Inc.

Trucks may be shown with optional equipment and/or features not available in all regions. Truck performance may be affected by the condition of the vehicle, how it is equipped and the application. Specifications are subject to change without notice. Consult your Yale® Dealer if any of the information shown is critical to your application.

CERTIFICATION: Yale lift trucks meet the design and construction requirements of B56.1-1969, per OSHA Section 1910.178(a)(2), and also comply with the B56.1 revision in effect at time of manufacture. Classified by Underwriters' Laboratories, Inc.

¹ 2023 WERC DC Measures Report.



MATERIALS HANDLING FOR:

- Third-party logistics (3PL)
- Auto parts distribution
- Beverage
- Cold & frozen foods
- Food distribution
- Food processing
- Furniture & furnishings
- Government
- Health & pharma
- Home centers & durables
- Retail & e-commerce