



# GP 40-70N

---

Pneumatic tire  
internal combustion  
counterbalanced forklift

4,000-7,000 lbs.



# Set your own standard.

Labor shortages and cost pressures are testing the ability of operations to balance profitability with productivity. There's no room for complacency — shouldn't your equipment be matched to your needs?

GP40N

GP50N

GP60N

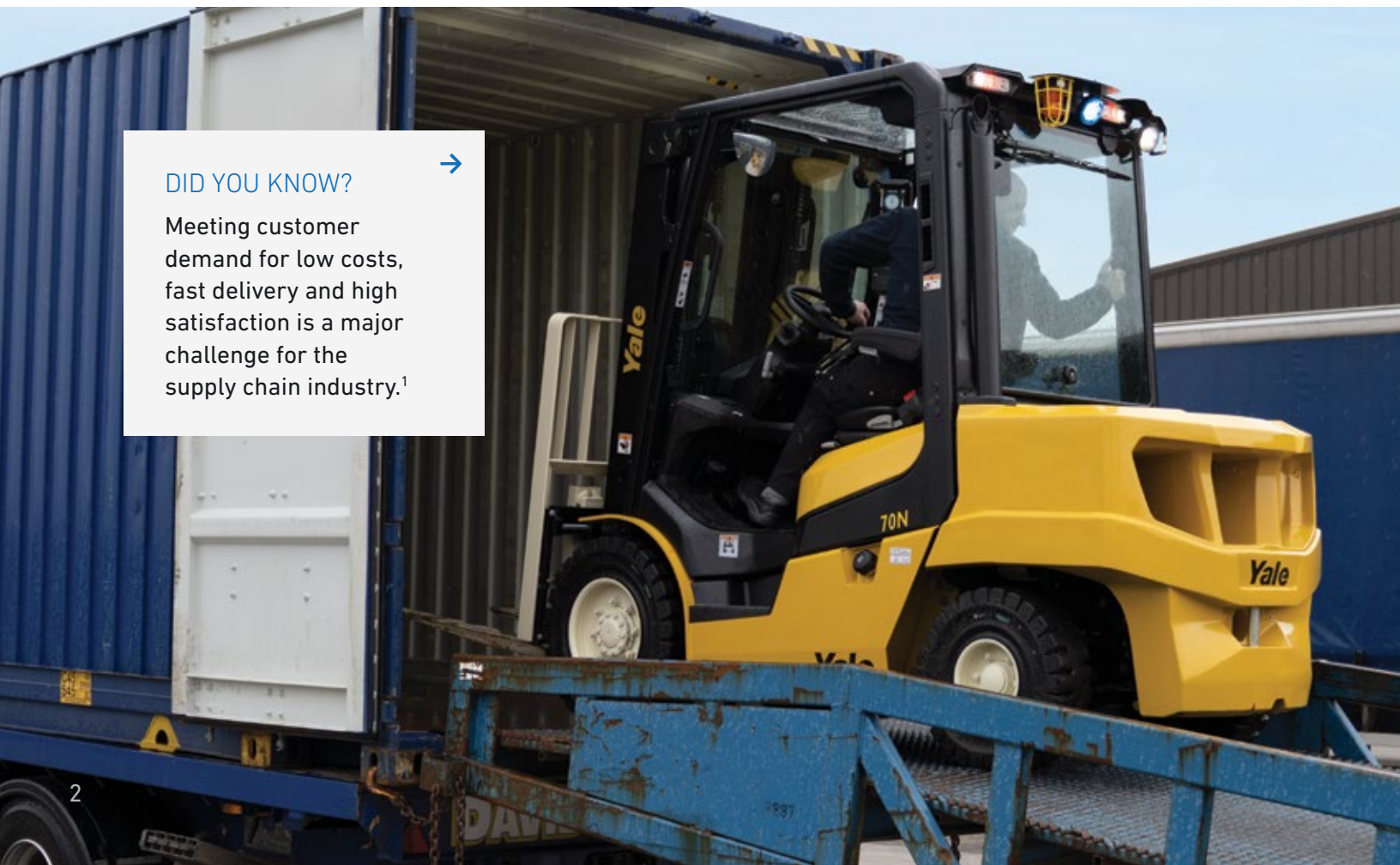
GP70N

The Yale® Series N allows you to build a truck specifically for your operators, your application and your business. Available in the 4,000–7,000-pound capacity range, the Series N internal combustion engine (ICE) lift trucks are available in four configurations to match your unique requirements — raising the bar for what you expect from a lift truck in a wide range of applications and environments.

## DID YOU KNOW?



Meeting customer demand for low costs, fast delivery and high satisfaction is a major challenge for the supply chain industry.<sup>1</sup>



# One truck, configurable to match the way you operate

Matching the right configuration of the Series N to your application is crucial to getting the most from your investment. The right configuration optimizes performance while minimizing costs and improving the longevity of the truck.

The GP40-70N is available in your choice of four drivetrain-based configurations.



## PRIMEMATCH™

Designed with simplicity and durability in mind. Suited to **primary**, everyday tasks or occasional moderate use.



## COREMATCH™

Delivers reliable power, smooth operation and the versatility to handle all your **core** tasks with rugged simplicity.



## INTELIMATCH™

Enhanced control, comfort and capability for demanding applications with advanced customization for **intelligent** operations.



## DURAMATCH™

Engineered for **durability** in intense, challenging applications, demanding shifts and difficult terrain.

Proven  
productivity  
comes  
standard



STRONG  
ERGONOMICS



EXCELLENT  
VISIBILITY



STREAMLINED  
MAINTENANCE



YANMAR INDUSTRIAL  
ENGINES



WIRELESS MONITORING  
TELEMETRY



DYNAMIC STABILITY  
SYSTEM

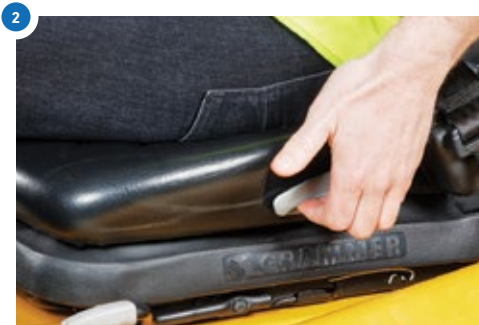
# Designed for your operators.

Don't let the physical demands facing lift truck operators undermine labor productivity or retention. The Series N prioritizes ergonomics and convenience, designed to make it easier for operators to get in and out of the truck, stay comfortable and sustain less stress while seated and operating the truck.



## **LARGE STEP AND GRAB HANDLE**

A large, durable grab handle and as much as 65% more foot space on the step than the leading competitor<sup>2</sup> helps reduce strain and twisting when getting in or out of the operator compartment.



## **SEAT ADJUSTABILITY**

Up to 25% more fore and aft seat adjustability than the leading competitor<sup>2</sup> allows the operator to customize their seated position to find postural relief and fight fatigue all shift.



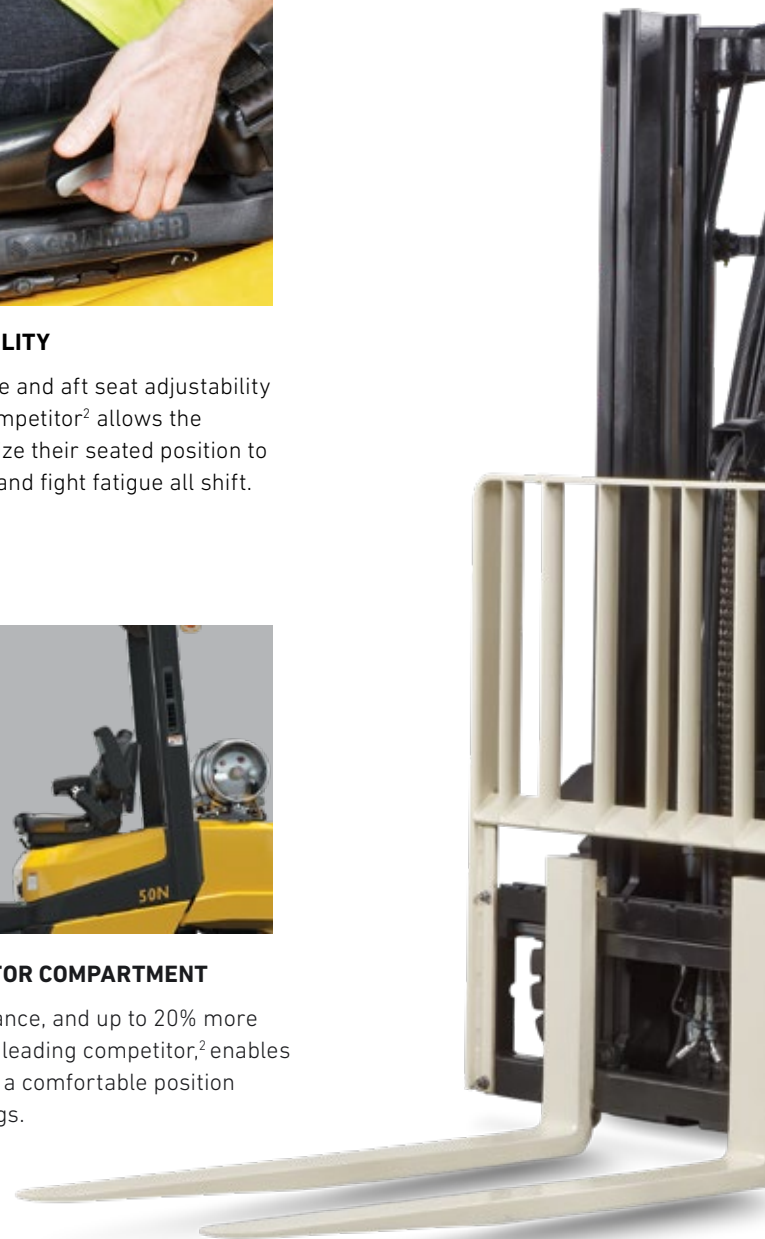
## **CONTOURED HOOD**

Provides space for the operator to swing their leg naturally when getting in and offers additional room to reach the step when getting out.



## **SPACIOUS OPERATOR COMPARTMENT**

Greater head clearance, and up to 20% more foot space than the leading competitor<sup>2</sup>, enables the operator to find a comfortable position and stretch their legs.







#### FLIP UP ARMREST +

Offers completely unobstructed access when getting in and out of the truck, while providing a comfortable rest not available on competitive models for operators using manual hydraulic levers.



#### CONVENIENT DISPLAY

An LCD or full-color touchscreen display offers quick, easy access to vital truck information, such as time, truck speed, operator alerts and fuel level.



#### FOOT ACTIVATED, HAND-RELEASED PARKING BRAKE\*

Designed to tuck out of the way when applied, enabling unobstructed entry and exit. Requires less effort than a hand-applied brake and minimizes operator lean and strain on the back.

+ = Optional equipment

\*Available on Intelimatch and Duramatch configurations

# Designed for your application.

More inventory and tighter spaces mean greater challenges moving goods, but operations can't allow productivity to slide. The Series N combines enhanced all-around visibility with innovative technology to help support operator awareness, confidence and efficiency.



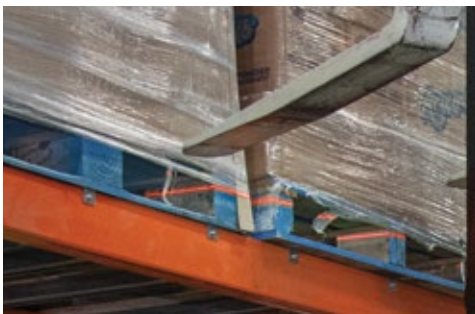
## **MAST OPENING**

A larger mast opening than the leading competitor,<sup>2</sup> offers a wide viewing window. This provides greater visibility through the mast, enhanced visibility of forks and load when picking at height, and improved visibility when traveling forward.



## **CLEAR GLASS ROOF +**

A laminated glass top canopy option provides an unobstructed upward view to support precision and productivity while picking and placing loads at height.



## **FORK LASER LEVEL LINE +**

Allows the operator to quickly and easily see where the fork tips will enter pallet load helping to reduce product and facility damage.

+ = Optional equipment







# Designed for your operation.

With increasingly demanding productivity targets pushing many operations to run two or even three shifts, you need to set a new standard for high uptime and low cost of ownership. Harsh duty cycles and challenging environments can threaten uptime, and you need equipment proven to stand up and deliver, shift after shift.

The Series N helps protect your bottom line. Every truck is equipped with a Yanmar Industrial Engine, with standard and configuration-driven features engineered to minimize unplanned downtime, simplify service and lower fuel costs.

## **EXTENDED PREVENTIVE MAINTENANCE INTERVALS**

Reduce the amount of maintenance needed and technician labor required per truck.

## **TAPERED ROLLER BEARINGS**

Tapered roller bearings in the steer axle are more durable against shock and require less frequent greasing than needle bearings found on most competitive models.

# Find your match. Set your own standard.

Your [local Yale® dealer](#) can help you assess your operation and pick the drivetrain-based configuration that is the right match. With your drivetrain selected, each configuration comes equipped with the options that will deliver the performance your operation demands.

## **PRIMEMATCH™**

Designed with simplicity and durability in mind. Suited to **primary**, everyday tasks or occasional moderate use.

## **COREMATCH™**

Delivers reliable power, smooth operation and the versatility to handle all your **core** tasks with rugged simplicity.

## **INTELMATCH™**


Enhanced control, comfort and capability for demanding applications with advanced customization for **intelligent** operations.

## **DURAMATCH™**

Engineered for **durability** in intense, challenging applications, demanding shifts and difficult terrain.







#### DID YOU KNOW? →

In best-in-class operations, more than 99% of orders are shipped damage free and delivered on time.<sup>3</sup>

#### OPERATOR ASSIST SOLUTIONS (OAS)

# Designed for your challenges

Help operators work more safely, efficiently and consistently, and help pedestrians stay out of harm's way.<sup>4</sup>

#### INFORM

##### WIRELESS MONITORING COMES STANDARD

Wireless monitoring, the level one offering of Yale Vision telemetry, is standard equipment on all Series N trucks. It provides real-time impact notifications, valuable utilization insights and a wide view of charging and maintenance information.

#### SEE & HEAR

##### AWARENESS AIDS

##### REAR-FACING CAMERA & REAR-VIEW DISPLAY +

Reverse driving camera and corresponding LCD display helps assist operators in monitoring rear of the truck for efficiency in maneuvering or changing directions.

##### SPOTLIGHTS AND PEDESTRIAN AWARENESS LIGHTS +

A highly configurable suite of light options, mounting positions, colors, and control methods deliver a best-fit solution to help support visibility and awareness in low light or congested areas.

##### SHELF HEIGHT SELECTOR +

Allows the operator to select a pre-set lift height. With one touch of the hydraulic controls, the truck automatically stops lifting at the pre-set height; ideal for applications with high lift heights and frequent loading into racks.

+ = Optional equipment

# Alert and intervene

Maintaining a strict focus on lift truck best practices can be a challenge, but with so much riding on lift truck operator performance, building and supporting safe, effective habits through proper, comprehensive training is critical. The Series N goes a step further, with smart features and technology that offers alerts and automated assistance to operators in real time.



## SMART. SIMPLE. MAINTENANCE-FREE TECHNOLOGY.

Dynamic Stability System (DSS) is a maintenance-free system that sends audible and visual alerts to the operator to help promote safe operating practices. Standard on all Series N trucks, this innovative technology—made up of four sub-systems—limits truck performance in certain conditions to help minimize forward and sideways tip-overs.<sup>4</sup>

LIFT HEIGHT  
SENSOR

TILT ANGLE  
SENSOR

### HOW DSS FUNCTIONS:

The Vehicle System Manager (VSM) or “brain” of the system continuously receives inputs from five maintenance-free sensors: lift height, hydraulic load, mast tilt, truck speed and steer angle.

Truck functionality is controlled when the operator pushes the truck beyond established stability threshold limits. When equipped with Yale Vision telemetry monitoring, data can be recorded each time a function activates.



## DSS SUB-SYSTEMS:

### LATERAL STABILITY SYSTEM

Reduces truck leans in turns, helping to improve lateral stability. The innovative steer axle design allows for superior travel over uneven surfaces.

### HIGH-LIFT TILT CONTROL

Limits tilt speed and forward tilt range when the carriage is raised above the height threshold while carrying a load.<sup>5</sup>

### HIGH-LIFT TRACTION CONTROL

Limits truck speed when the carriage is raised above the height threshold.

### CORNER CONTROL

Produces a smooth deceleration by dynamically limiting truck speed around corners based on how tightly the truck is turning.

\* For illustration purposes only; sensor placement may vary



# About Yale

Yale Lift Truck Technologies leverages over a century of material handling experience and substantial investment in innovation to bring the most advanced technology-driven lift truck solutions to market. The company offers a full line of award-winning lift trucks, including reach trucks, order pickers, turret trucks, pallet jacks and trucks, pallet stackers, tow tractors and counterbalanced forklifts, as well as powerful operator assist solutions, proven robotics and a wide range of power sources to help customers adapt to today's demanding supply chain. Yale and its independent dealer network support these solutions with comprehensive after-sales service, parts, financing and training.




Yale Lift Truck Technologies  
P.O. Box 7367  
Greenville, NC 27835-7367  
U.S.A.



EXPLORE MORE  
ONLINE.  
←

**yale.com**

© 2025 Hyster-Yale Materials Handling, Inc., all rights reserved. YALE and  are trademarks of Hyster-Yale Materials Handling, Inc.

Trucks may be shown with optional equipment and/or features not available in all regions. Truck performance may be affected by the condition of the vehicle, how it is equipped and the application. Specifications are subject to change without notice. Consult your Yale® Dealer if any of the information shown is critical to your application.

CERTIFICATION: Yale lift trucks meet the design and construction requirements of B56.1-1969, per OSHA Section 1910.178(a)(2), and also comply with the B56.1 revision in effect at time of manufacture. Classified by Underwriters' Laboratories, Inc.

<sup>1</sup>2025 MHI report. <sup>2</sup>Compared to Toyota 8 Series 8FGU25 model; competitive comparison data validated through internal testing. <sup>3</sup>WERC DC MEASURES 2025. <sup>4</sup>While lift truck systems support safe operation and help minimize the potential for tip overs, proper operation of the lift truck and 100% full-time utilization of the truck's seat belt are the primary and best means of keeping the truck and operator upright and safe. Refer to the operator and service manuals for proper operation and maintenance. <sup>5</sup>Feature not available with mechanical lever hydraulics.

## MATERIALS HANDLING FOR:

Third-party logistics (3PL)

Auto parts distribution

Beverage

Cold & frozen foods

Food distribution

Food processing

Furniture & furnishings

Government

Health & pharma

Home centers & durables

Retail & e-commerce