

Yale 
LIFT TRUCK TECHNOLOGIES

GP 110-155UX

Pneumatic tire forklift

11,000-15,500 lbs.



Simply meets your needs.

The Yale UX Series was designed for less demanding applications, offering a dependable and cost-effective solution to get the job done— all backed by the trusted Yale name. This low maintenance truck enhances productivity while minimizing operational costs.

GP110UX

GP135UX

GP155UX

The GP110-155UX design prioritizes operator comfort. Its ergonomically designed compartment creates a natural and comfortable environment to help reduce fatigue throughout the shift. A range of standard features and customizable options allow the truck to be tailored to specific application needs.



SERVICEABILITY

Easily serviced due to the low complexity of the drive and lift systems.



ERGONOMICS

Equipped with various standard features to help operators work comfortably.



COST OF OPERATION

Low initial investment makes it suitable for low intensity applications.



DEPENDABILITY

Robust components contribute to reliable operations and lower wear and tear.

1. TRANSMISSION & DRIVE AXLE

The heavy-duty Powershift transmission has two forward gears and one reverse gear along with a durable and long life drive axle.

2. ROBUST OVERHEAD GUARD

The overhead guard features profiled steel, enhancing reliability and operator protection.

3. LOW STEP HEIGHT

Wide convenient step provides operators with easy access on and off the truck from either side.



4. SPACIOUS FOOTWELL

Spacious design provides extra foot space for ease of operation and increased operator comfort.

5. 3.5" LCD DISPLAY

Easy to read display provides convenient viewing of critical data when driving and operating.

6. HAND PARKING BRAKE

Hand parking brake lever with button

Simplicity in maintenance. Flexibility in customization.

Efficiency and ease of maintenance are critical in your operation. The UX Series can be easily serviced and maintained in the field with limited tools due to the low complexity of the drive and lift systems. Various configurations and a range of optional features are available to meet your specific operational requirements without compromising on performance.



EASY TO SERVICE

A large hood opening allows technicians to easily access key components for service and repairs helping to minimize downtime.



STRAIGHT FORWARD REPAIRS

No computer-based diagnostics required keeps service tasks and troubleshooting simple and straight forward.



EXCHANGEABLE COMPONENTS

Engine cover, instrument panel, display and most other components are exchangeable with other capacities in the same model range.



DURABLE ENGINE

The standard Kubota 3.8L EPA certified DOC diesel engine provides reliability and easy sourcing of replacement parts and is also available in LPG and dual fuel.





LIGHT PACKAGES +

Optional light packages meet your unique application-specific requirements such as working in low-light environments, high traffic areas or traveling in reverse.



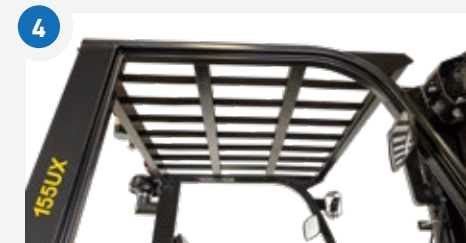
MULTIPLE CARRIAGE OPTIONS +

Multiple carriage options, including side shifting and side shifting fork positioners for more precise load placement.



WIDE VIEW MASTS +

A range of rigid 2-stage and 3-stage masts are available covering lift heights from 118"-256".



CAB CONFIGURATIONS +

From a top cover to a fully enclosed cab, configurations are available for operation in various environments and weather conditions.

+ = *Optional equipment*

Operator comfort meets efficiency.

The UX Series is engineered with the operator in mind, providing functionality and comfort to help operators work more efficiently. It's equipped with various standard features such as an operator presence system and a non-suspension cushioned seat with lumbar support. The ergonomically designed operator's compartment has a familiar automotive layout that simplifies operation.



FULL SUSPENSION SEAT +

When the application calls for it, the optional full suspension seat offers additional comfort when driving over rough terrain and uneven surfaces.



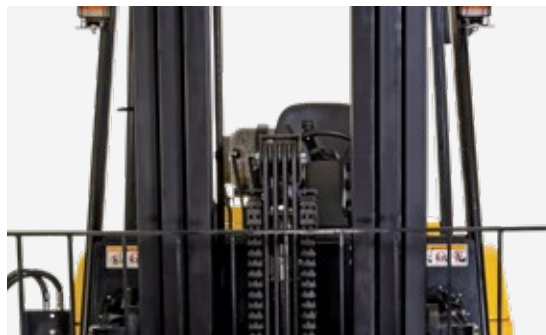
FOOTWELL DESIGN

Familiar automotive-style pedal lay out contributes to ease of operation and load handling, helping to reduce operator fatigue.



COST-EFFECTIVE REPLACEMENT PARTS +

The grab handle with a horn button provides an ergonomic option during reverse travel, encouraging operators to look in the direction of travel while maintaining ability to sound the horn.

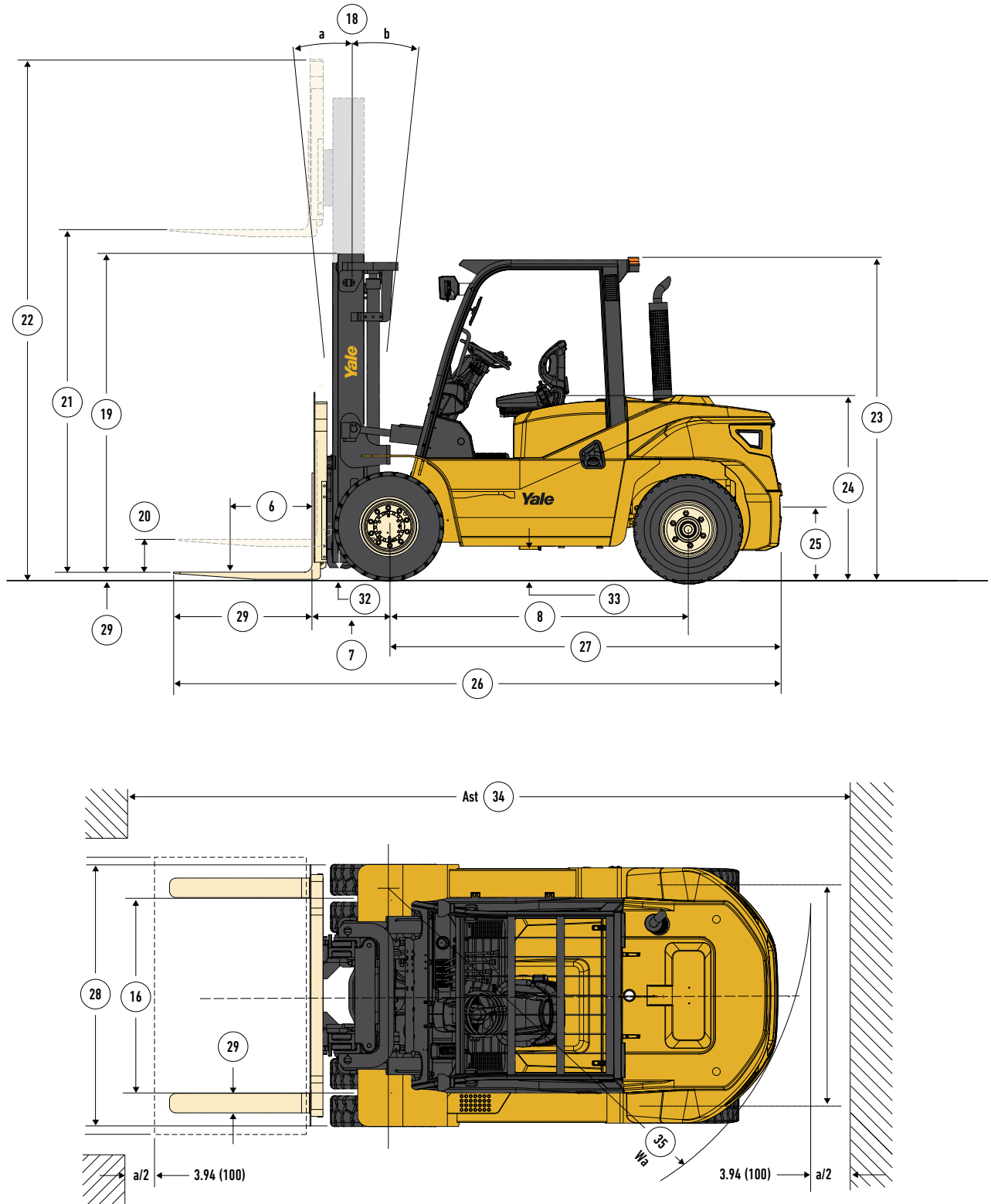


THROUGH MAST VISIBILITY

Mast channels are widely spaced with lift cylinders and chains strategically positioned behind them for enhanced visibility, minimizing blind spots and increasing operator awareness.

+ = *Optional equipment*

TRUCK DIMENSIONS



Circled dimensions correspond to the line numbers on the tabulated chart inside the spec sheet. Dimensions are in inches (millimeters).

GP110UX GENERAL SPECIFICATIONS

GENERAL	1	Manufacturer		Yale	
	2	Model designation		GP110UX	
		Engine		Kubota 3.8L	Kubota 3.8L
	3	Drive		Diesel	LPG
	4	Operator type		Seat	
	5	Rated capacity/rated load	lbs. (kg)	11000 (4989.5)	
	6	Load center distance	in. (mm)	24 (600)	
	7	Load distance, center of drive axle to fork	in. (mm)	23.2 (590)	
8	Wheelbase (with mast vertical)	in. (mm)	90.6 (2300)		
WEIGHT	9	Service weight		18430.7 (8360)	
	10	Axle loading, RL front/rear		26653.9/2799.9 (12090/1270)	
	11	Axle loading, NL front/rear		8465.8/9964.9 (3840/4520)	
TIRES/CHASSIS	12	Tire type		Pneumatic	
	13	Tire size, front		8.25-15-14PR	
	14	Tire size, rear		8.25-15-14PR	
	15	Wheels, number front/rear		4x2	
	16	Tread, front	in. (mm)	58.6 (1489)	
	17	Tread, rear	in. (mm)	66.9 (1700)	
	DIMENSIONS	18	Tilt of mast/fork carriage, forward /backward		degrees 10/12
19		Height, mast lowered		in. (mm) 98.4 (2500)	
20		Free lift		in. (mm) 8.1 (205)	
21		Lift		in. (mm) 118.1 (3000)	
22		Height, mast extended		in. (mm) 174.2 (4425)	
23		Height of overhead guard		in. (mm) 96.5 (2450)	
24		Seat height/stand height		in. (mm) 55.1 (1400)	
25		Towing coupling height		in. (mm) 13.6 (345)	
26		Overall length		in. (mm) 185.6 (4715)	
27		Length to face of forks		in. (mm) 137.6 (3495)	
28		Overall width		in. (mm) 79.5 (2020)	
29		Fork dimensions ISO2331		in. (mm) 2.6x5.9x48 (65x150x1220)	
30		Fork carriage ISO 2328. Class/type, A/B		ISO 4A	
31		Fork carriage width	in. (mm)	72.6 (1845)	
32		Ground clearance, laden, below mast		in. (mm) 7.9 (200)	
33		Ground clearance, centre of wheelbase		in. (mm) 9.1 (230)	
34		Aisle width with pallets 40" x 48"		in. (mm) 207 (5260)	
35		Turning radius		in. (mm) 128 (3250)	
36	Internal turning radius		in. (mm) 43.5 (1105)		
PERFORMANCE DATA	37	Travel speed, RL/NL		1-Speed	mph (km/h) 5.6/5.6 (9/9)
				2-Speed	14.9/15.5 (24/25) 18.6/19.3 (30/31)
	38	Travel speed, RL/NL, reverse		1-Speed	mph (km/h) 5.6/5.6 (9/9)
				2-Speed	14.9/15.5 (24/25) 18.6/19.3 (30/31)
	39	Lifting speed, RL/NL		fpm (mm/s) 68.9/86.6 (350/440) 86.6/90.6 (440/460)	
	40	Lowering speed RL/NL		fpm (mm/s) 500/400	
	41	Max. drawbar RL/NL		lbf (N) 13713.3/8093.1 (61000/36000) 14837.4/9217.2 (66000/41000)	
42	Gradeability, RL/NL @ 3mph (4.8 km/h)		% 26/20 28/20		
43	Service brake		Hydraulic		
COMBUSTION-ENGINE	44	Engine manufacturer/type		Kubota 3.8L Kubota 3.8L	
	45	Engine power according to DIN ISO 1585		hp (Kw) 73.2 (54.6) 79.4 (59.2)	
	46	Rated speed		min-1 2200 2400	
ADDITIONAL DATA	47	Number of cylinders/displacement		-/cm3 4/3769	
	48	Operating pressure for attachments		PSI (bar) 2828.2 (195)	
	49	Oil volume for attachments		gal/min (l/min) 21.1 (80)	
	50	Fuel tank capacity (gas & diesel only)		gal (L) 37 (140) N/A	
	51	Sound pressure level at the driver's seat		dB (A) 83	
	52	Towing coupling, type DIN		PIN	

GP135UX GENERAL SPECIFICATIONS

				Yale	
GENERAL	1	Manufacturer		GP135UX	
	2	Model designation		Kubota 3.8L	
		Engine		Kubota 3.8L	
	3	Drive		Diesel	LPG
	4	Operator type		Seat	
	5	Rated capacity/rated load	lbs. (kg)	13500 (6000)	
	6	Load center distance	in. (mm)	24 (600)	
	7	Load distance, center of drive axle to fork	in. (mm)	23.2 (590)	
8	Wheelbase (with mast vertical)	in. (mm)	90.6 (2300)		
WEIGHT	9	Service weight		19863.7 (9010)	
	10	Axle loading, RL front/rear		29652.2/3439.2 (13450/1560)	
	11	Axle loading, NL front/rear		9656.2/10207.4 (4380/4630)	
TIRES/CHASSIS	12	Tire type		Pneumatic	
	13	Tire size, front		8.25-15-14PR	
	14	Tire size, rear		8.25-15-14PR	
	15	Wheels, number front/rear		4x2	
	16	Tread, front	in. (mm)	58.6 (1489)	
	17	Tread, rear	in. (mm)	66.9 (1700)	
	DIMENSIONS	18	Tilt of mast/fork carriage, forward /backward		10/12
19		Height, mast lowered		98.4 (2500)	
20		Free lift		8.1 (205)	
21		Lift		118.1 (3000)	
22		Height, mast extended		174.2 (4425)	
23		Height of overhead guard		96.5 (2450)	
24		Seat height/stand height		55.1 (1400)	
25		Towing coupling height		13.6 (345)	
26		Overall length		185.6 (4715)	
27		Length to face of forks		137.6 (3495)	
28		Overall width		79.5 (2020)	
29		Fork dimensions ISO2331		2.6x5.9x48 (65x150x1220)	
30		Fork carriage ISO 2328. Class/type, A/B		ISO 4A	
31		Fork carriage width	in. (mm)	72.6 (1845)	
32		Ground clearance, laden, below mast		7.9 (200)	
33		Ground clearance, centre of wheelbase		9.1 (230)	
34		Aisle width with pallets 40" x 48"		209.1 (5310)	
35		Turning radius		129.9 (3300)	
36	Internal turning radius		43.5 (1105)		
PERFORMANCE DATA	37	Travel speed, RL/NL		5.6/5.6 (9/9)	
		1-Speed	mph (km/h)	14.9/15.5 (24/25)	
	38	Travel speed, RL/NL, reverse		5.6/5.6 (9/9)	
		1-Speed	mph (km/h)	14.9/15.5 (24/25)	
	39	Lifting speed, RL/NL		68.9/86.6 (350/440)	
	40	Lowering speed RL/NL		500/400	
	41	Max. drawbar RL/NL		13713.3/8093.1 (61000/36000)	
42	Gradeability, RL/NL @ 3mph (4.8 km/h)		22/20		
43	Service brake		Hydraulic		
COMBUSTION-ENGINE	44	Engine manufacturer/type		Kubota 3.8L	
	45	Engine power according to DIN ISO 1585		73.2 (54.6)	
	46	Rated speed		2200	
ADDITIONAL DATA	47	Number of cylinders/displacement		4/3769	
	48	Operating pressure for attachments		2828.2 (195)	
	49	Oil volume for attachments		21.1 (80)	
	50	Fuel tank capacity (gas & diesel only)		37 (140)	
	51	Sound pressure level at the driver's seat		83	
	52	Towing coupling, type DIN		PIN	

GP155UX GENERAL SPECIFICATIONS

GENERAL	1	Manufacturer		Yale		
	2	Model designation		GP155UX		
		Engine		Kubota 3.8L	Kubota 3.8L	
	3	Drive		Diesel	LPG	
	4	Operator type		Seat		
	5	Rated capacity/rated load	lbs. (kg)	15500 (7000)		
	6	Load center distance	in. (mm)	24 (600)		
	7	Load distance, center of drive axle to fork	in. (mm)	23.2 (590)		
8	Wheelbase (with mast vertical)	in. (mm)	90.6 (2300)			
WEIGHT	9	Service weight		21274.6 (9650)		
	10	Axle loading, RL front/rear		32848.8/3858.1 (14900/1750)		
	11	Axle loading, NL front/rear		8928.7/12345.9 (4050/5600)		
TIRES/CHASSIS	12	Tire type		Pneumatic		
	13	Tire size, front		8.25-15-14PR		
	14	Tire size, rear		8.25-15-14PR		
	15	Wheels, number front/rear		4x2		
	16	Tread, front	in. (mm)	58.6 (1489)		
	17	Tread, rear	in. (mm)	66.9 (1700)		
	DIMENSIONS	18	Tilt of mast/fork carriage, forward /backward		degrees 10/12	
19		Height, mast lowered		in. (mm) 103.3 (2625)		
20		Free lift		in. (mm) 8.1 (205)		
21		Lift		in. (mm) 118.1 (3000)		
22		Height, mast extended		in. (mm) 174.2 (4425)		
23		Height of overhead guard		in. (mm) 96.5 (2450)		
24		Seat height/stand height		in. (mm) 55.1 (1400)		
25		Towing coupling height		in. (mm) 13.6 (345)		
26		Overall length		in. (mm) 190.2 (4830)		
27		Length to face of forks		in. (mm) 142.1 (3610)		
28		Overall width		in. (mm) 79.5 (2020)		
29		Fork dimensions ISO2331		in. (mm) 2.6x5.9x48 (65x150x1220)		
30		Fork carriage ISO 2328. Class/type, A/B		ISO 4A		
31		Fork carriage width	in. (mm)	72.6 (1845)		
32		Ground clearance, laden, below mast		in. (mm) 7.9 (200)		
33		Ground clearance, centre of wheelbase		in. (mm) 9.1 (230)		
34		Aisle width with pallets 40" x 48"		in. (mm) 211.4 (5370)		
35		Turning radius		in. (mm) 132.3 (3360)		
36	Internal turning radius		in. (mm) 43.5 (1105)			
PERFORMANCE DATA	37	Travel speed, RL/NL		1-Speed	mph (km/h) 5.6/5.6 (9/9)	
				2-Speed	14.9/15.5 (24/25) 18.6/19.3 (30/31)	
	38	Travel speed, RL/NL, reverse		1-Speed	mph (km/h) 5.6/5.6 (9/9)	
				2-Speed	14.9/15.5 (24/25) 18.6/19.3 (30/31)	
	39	Lifting speed, RL/NL		fpm (mm/s) 68.9/86.6 (350/440) 86.6/90.6 (440/460)		
	40	Lowering speed RL/NL		fpm (mm/s) 500/400		
	41	Max. drawbar RL/NL		lbf (N) 13713.3/8093.1 (61000/36000)	14837.4/9217.2 (66000/41000)	
42	Gradeability, RL/NL @ 3mph (4.8 km/h)		% 20/20 21/20			
43	Service brake		Hydraulic			
COMBUSTION-ENGINE	44	Engine manufacturer/type		Kubota 3.8L	Kubota 3.8L	
	45	Engine power according to DIN ISO 1585		hp (Kw) 73.2 (54.6)	79.4 (59.2)	
	46	Rated speed		min-1 2200	2400	
ADDITIONAL DATA	47	Number of cylinders/displacement		-/cm3 4/3769		
	48	Operating pressure for attachments		PSI (bar) 2828.2 (195)		
	49	Oil volume for attachments		gal/min (l/min) 21.1 (80)		
	50	Fuel tank capacity (gas & diesel only)		gal (L) 37 (140)	N/A	
	51	Sound pressure level at the driver's seat		dB (A) 83		
52	Towing coupling, type DIN		PIN			

MAST TABLE

Max fork height				Overall extended Height																	
				Mast tilt		Lowered height				Without load backrest				With load backrest				Free lift			
				forward	Back	11,000-13,500 lbs.		15,500 lbs.		11,000-13,500 lbs.		15,500 lbs.		11,000-13,500 lbs.		15,500 lbs.		11,000-13,500 lbs.		15,500 lbs.	
in	mm	degrees	degrees	in.	mm	in.	mm	in.	mm	in.	mm	in.	mm	in.	mm	in.	mm	in.	mm		
2 STAGE LFL																					
118.1	3000	10	12	98.4	2500	103.3	2625	153.5	3900	157.5	4000	172.0	4370	172.0	4370	8.1	205	8.1	205		
129.9	3300	10	12	104.3	2650	109.3	2775	165.4	4200	169.3	4300	183.9	4670	183.9	4670	8.1	205	8.1	205		
137.8	3500	10	12	108.3	2750	113.2	2875	173.2	4400	177.2	4500	191.7	4870	191.7	4870	8.1	205	8.1	205		
147.6	3750	10	12	113.2	2875	118.1	3000	183.1	4650	187.0	4750	201.6	5120	201.6	5120	8.1	205	8.1	205		
157.5	4000	10	12	120.1	3050	125.0	3175	192.9	4900	196.9	5000	211.4	5370	211.4	5370	8.1	205	8.1	205		
167.3	4250	6	6	125.0	3175	129.9	3300	202.8	5150	206.7	5250	221.3	5620	221.3	5620	8.1	205	8.1	205		
177.2	4500	6	6	129.9	3300	134.8	3425	215.6	5475	220.5	5600	233.3	5925	233.3	5925	8.1	205	8.1	205		
187.0	4750	6	6	134.8	3425	139.8	3550	222.4	5650	226.4	5750	240.9	6120	240.9	6120	8.1	205	8.1	205		
196.9	5000	6	6	139.8	3550	144.7	3675	232.3	5900	236.2	6000	250.8	6370	250.8	6370	8.1	205	8.1	205		
216.5	5500	3	6	151.6	3850	156.5	3975	252.0	6400	255.9	6500	270.5	6870	270.5	6870	8.1	205	8.1	205		
236.2	6000	3	6	161.4	4100	166.3	4225	271.7	6900	275.6	7000	290.2	7370	290.2	7370	8.1	205	8.1	205		
2 STAGE FFL																					
118.1	3000	10	12	103.3	2625	103.3	2625	159.4	4050	159.4	4050	172.0	4370	172.0	4370	61.2	1555	49.4	1255		
129.9	3300	10	12	109.3	2775	109.3	2775	171.3	4350	171.3	4350	183.9	4670	183.9	4670	67.1	1705	55.3	1405		
137.8	3500	10	12	113.2	2875	113.2	2875	179.1	4550	179.1	4550	191.7	4870	191.7	4870	71.1	1805	59.3	1505		
147.6	3750	10	12	118.1	3000	118.1	3000	189.0	4800	189.0	4800	201.6	5120	201.6	5120	76.0	1930	64.2	1630		
157.5	4000	10	12	125.0	3175	125.0	3175	198.8	5050	198.8	5050	211.4	5370	211.4	5370	82.9	2105	71.1	1805		
3 STAGE FFL																					
157.5	4000	6	6	98.6	2505	98.6	2505	196.9	5000	196.9	5000	213.4	5420	213.4	5420	54.9	1395	44.5	1130		
171.3	4350	6	6	103.5	2630	103.5	2630	210.6	5350	210.6	5350	225.2	5720	225.2	5720	59.8	1520	49.4	1255		
177.2	4500	6	6	105.5	2680	105.5	2680	216.5	5500	216.5	5500	233.1	5920	233.1	5920	61.8	1570	51.4	1305		
189.0	4800	6	6	109.4	2780	109.4	2780	228.3	5800	228.3	5800	242.9	6170	242.9	6170	65.7	1670	55.3	1405		
196.9	5000	6	6	113.4	2880	113.4	2880	236.2	6000	236.2	6000	250.8	6370	250.8	6370	69.7	1770	59.3	1505		
212.6	5400	3	6	118.3	3005	118.3	3005	252.0	6400	252.0	6400	266.5	6770	266.5	6770	74.6	1895	64.2	1630		
236.2	6000	3	6	130.1	3305	130.1	3305	275.6	7000	275.6	7000	290.2	7370	290.2	7370	86.5	2196	76.0	1930		
255.9	6500	3	6	139.0	3530	139.0	3530	295.3	7500		7500	311.8	7920	311.8	7920	95.3	2420	84.8	2155		
212.6	5400	3	6	102.8	2610	102.8	2610	246.5	6260	246.5	6260	262.2	6660	262.2	6660	69.7	1770	69.7	1770		
236.2	6000	3	6	112.2	2850	112.2	2850	270.1	6860	270.1	6860	285.8	7260	285.8	7260	79.1	2010	79.1	2010		
255.9	6500	3	6	120.1	3050	120.1	3050	289.8	7360	289.8	7360	305.5	7760	305.5	7760	87.0	2210	87.0	2210		

FEATURES LIST

POWERTRAIN	STD	OPT	CHASSIS - WHEELS & TIRES	STD	OPT
Kubota 3.8L EPA Certified DOC diesel	●		Dual tread		●
Kubota 3.8L EPA Certified LPG		●	Pneumatic shape solid (PSS) tires	●	
Powershift transmission 2-speed fwd / 1-speed rev	●		Pneumatic tires		●
Drum brakes	●		CHASSIS - OPERATOR COMPARTMENT	STD	OPT
Key switch start	●		96.5" overhead guard	●	
Standard environmental construction (14F to 104F)	●		PVC top screen		●
Cold environmental construction (-4F to 104F)		●	Front screen with wiper		●
High air intake	●		Full steel cab with front and rear wipers		●
High air intake with pre-cleaner		●	Front, top, and rear screens with front and rear wipers		●
Non-locking fuel cap	●		Front and top screens with front washer/wiper		●
Locking fuel cap		●	Air conditioning		●
Overhead exhaust		●	Cab heater		●
Spark arrester		●	Lever directional control	●	
LPG tank bracket with dual straps		●	Foot Directional Control Pedal		●
Operator Presence System	●		Steering wheel with spinner knob	●	
Battery disconnect		●	Non-suspension vinyl seat	●	
LIFT OPTIONS - FRONT END EQUIPMENT	STD	OPT	Full-suspension vinyl seat		●
2-stage limited free lift mast	●		Black seat belt	●	
2-stage full free lift mast		●	Seat belt with interlock		●
3-stage full free lift mast		●	Seat belt with sequential interlock		●
73" hook type carriage	●		CHASSIS - OPERATOR COMPARTMENT ACCESSORIES	STD	OPT
83" hook type carriage		●	Rear grab handle with horn button		●
73" ISS		●	Dual side view mirrors		●
73" ISSFP		●	LIGHTS & ALARMS	STD	OPT
73" LDSJ HOSS		●	LED work lights		●
73" LDSJ HOSSFP		●	Rear lights package with turn signals		●
73" Cascade HOSS		●	Strobe light		●
Hook type standard taper forks	●		Audible reverse alarm		●
51.5" load backrest	●		Park brake alarm	●	
10° forward / 12° back mast tilt	●		Blue spot light		●
6° forward / 6° back mast tilt		●			
3° forward / 6° back mast tilt		●			
Tilt cylinder boots		●			
LIFT OPTIONS - HYDRAULICS	STD	OPT			
Manual hydraulic levers	●				
2 function (0 auxiliary) hydraulics	●				
3 function (1 auxiliary) hydraulics		●			
4 function (2 auxiliary) hydraulics		●			
Clamping		●			
Auxiliary function hose groups		●			

About Yale

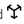
Yale Lift Truck Technologies leverages over a century of material handling experience and substantial investment in innovation to bring the most advanced technology-driven lift truck solutions to market. The company offers a full line of award-winning lift trucks, including reach trucks, order pickers, turret trucks, pallet jacks and trucks, pallet stackers, tow tractors and counterbalanced forklifts, as well as powerful operator assist solutions, proven robotics and a wide range of power sources to help customers adapt to today's demanding supply chain. Yale and its independent dealer network support these solutions with comprehensive after-sales service, parts, financing and training.

Yale Lift Truck Technologies
P.O. Box 7367
Greenville, NC 27835-7367
U.S.A.

yale.com



EXPLORE MORE
ONLINE.
←

© 2025 Hyster-Yale Materials Handling, Inc., all rights reserved. YALE and  are trademarks of Hyster-Yale Materials Handling, Inc.

Trucks may be shown with optional equipment and/or features not available in all regions. Truck performance may be affected by the condition of the vehicle, how it is equipped and the application. Specifications are subject to change without notice. Consult your Yale® Dealer if any of the information shown is critical to your application.

CERTIFICATION: Yale lift trucks meet the design and construction requirements of B56.1-1969, per OSHA Section 1910.178(a)(2), and also comply with the B56.1 revision in effect at time of manufacture.



MATERIALS HANDLING FOR:

Third-party logistics (3PL)

Auto parts distribution

Beverage

Cold & frozen foods

Food distribution

Food processing

Furniture & furnishings

Government

Health & pharma

Home centers & durables

Retail & e-commerce